



Propsposterous Plants



Roald Dahl invented many **propsposterous** plants, like the **bong-bong tree** that grows in **Loompaland**. Can you invent your own **extra-usual** tree, plant or flower?

Draw a picture of your **propsposterous** plant in the box below, and then give it a **name** and a **short description**. If you like, you can invent a Latin name for it too!



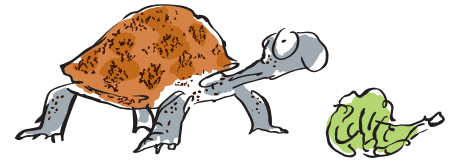
Look up the categories for **ALL ABOUT TREES** and **PLANTS & FLOWERS** in the **Oxford Roald Dahl Thesaurus** to find names for the parts of a tree or plant, and words to describe them. Then fill in the blanks below with the words that you find.

Example:

My propsposterous plant is called a dottyflower.

It has a woody stem, spiky leaves, and purple spotted petals.

Its Latin name is: Flora spottica.

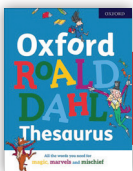


My propsposterous plant is called a _____.

It has _____, _____,

and _____.

Its Latin name is: _____.



Discover a world of **lickswishy language** and unlock your inner **splendiferous storyteller**, just like Roald Dahl



Also available

@OUPChildrens

www.oxfordowl.co.uk/roald-dahl

OXFORD