

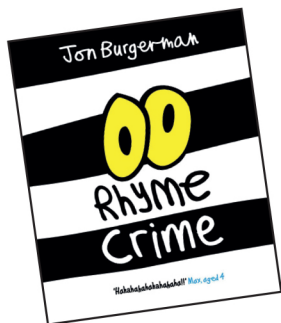


RHYME CRIME PAIRS GAME

Oxford
Children's
Books

Can you find the thief's matching pairs?

1. Cut out the cards (make sure that you ask an adult to help you cut along the dotted lines).
2. Shuffle the cards and lay them all face down.
3. On each turn, one player turns over two cards. If the pictures match, you win the pair and have another go. If the pictures don't match, turn both cards face down and pass on to the next player.
4. Collect as many matching pairs as you can. The player with the most wins!



OUT
NOW!



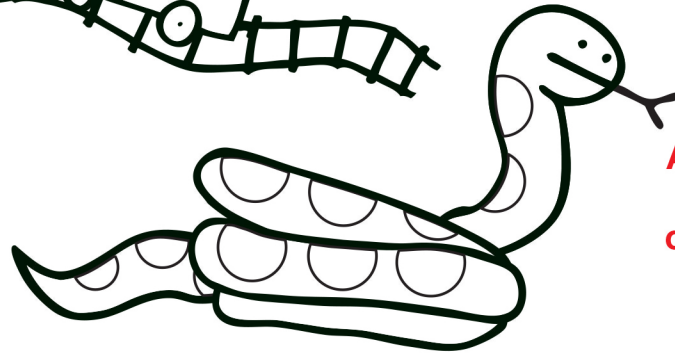
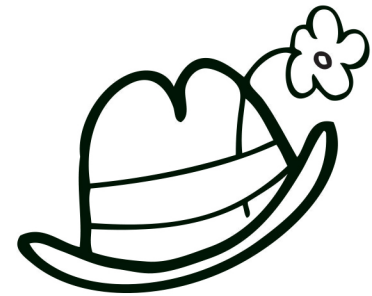
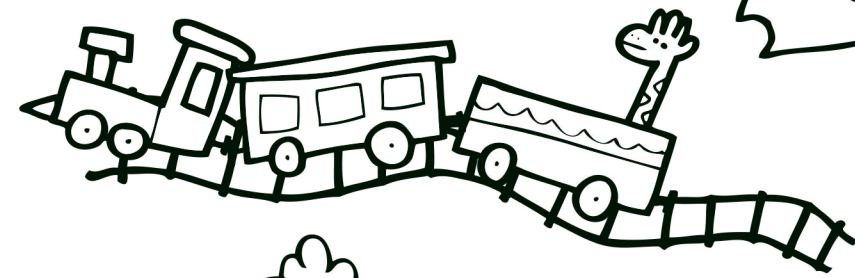
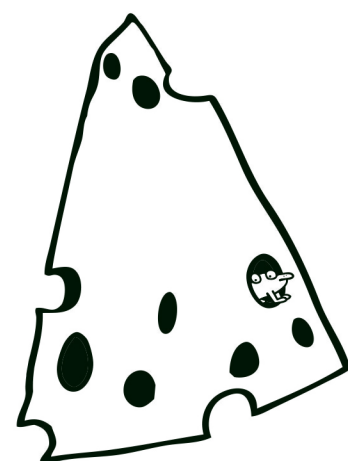
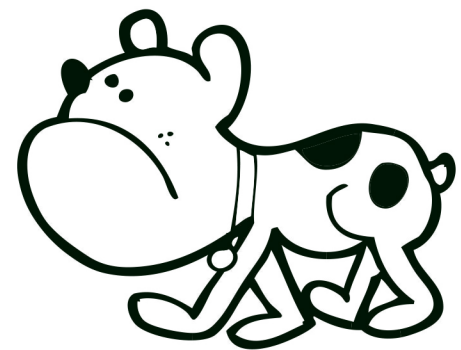


WHAT'S IN THE THIEF'S SWAG BAG?

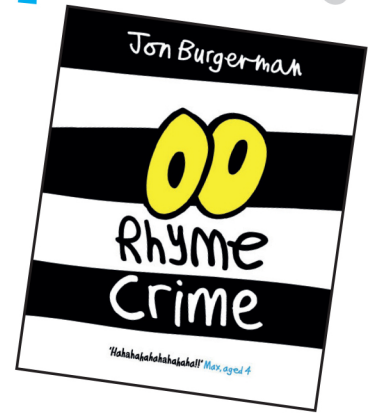
Oxford
Children's
Books

Can you uncover the crime? Draw a line to match up the word and the picture!

- hat
- cheese
- dog
- bear
- crocodile
- snake
- train



OUT
NOW!



A hilarious rhyming story
that will have young
children in fits of giggles!