

Adding and subtracting fractions

Question 1

Can you complete these adding and subtracting fractions calculations?

$$\text{a} \quad \frac{2}{5} + \frac{1}{5} = \frac{\boxed{}}{\boxed{}}$$

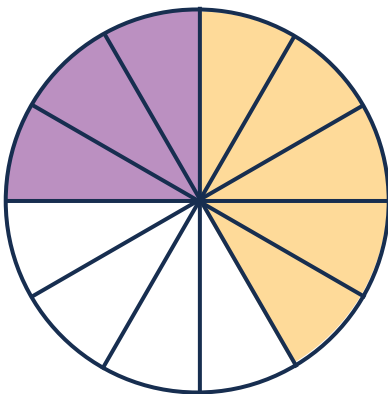
$$\text{b} \quad \frac{7}{8} - \frac{4}{8} = \frac{\boxed{}}{\boxed{}}$$

$$\text{c} \quad \frac{3}{4} - \frac{1}{4} = \frac{\boxed{}}{\boxed{}}$$

$$\text{d} \quad \frac{3}{11} + \frac{5}{11} = \frac{\boxed{}}{\boxed{}}$$

Question 2

a Can you write an addition sentence for this diagram?



$$\frac{\boxed{}}{\boxed{}} + \frac{\boxed{}}{\boxed{}} = \frac{\boxed{}}{\boxed{}}$$

b Can you write a subtraction sentence for this diagram?



$$\frac{\boxed{}}{\boxed{}} - \frac{\boxed{}}{\boxed{}} = \frac{\boxed{}}{\boxed{}}$$



Adding and subtracting fractions

- c Can you draw a diagram for this addition sentence?

$$\frac{2}{9} + \frac{5}{9} = \frac{\boxed{}}{\boxed{}}$$

Question 3

Can you complete the missing parts of these calculations?

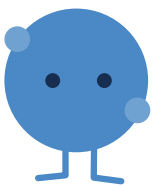
a $\frac{1}{5} + \frac{\boxed{}}{5} = \frac{5}{5} - \frac{\boxed{}}{5}$

b $\frac{\boxed{}}{12} - \frac{\boxed{}}{12} = \frac{3}{12} + \frac{\boxed{}}{\boxed{}}$

c $\frac{9}{10} = \frac{\boxed{}}{10} + \frac{\boxed{}}{10}$

d $\frac{\boxed{}}{6} + \frac{3}{6} = \frac{\boxed{}}{6} + \frac{\boxed{}}{6}$

Question 4



Theo has $\frac{7}{8}$ of a tin of paint. He uses $\frac{5}{8}$ of the tin to paint his front door. How much paint does he have left?

$$\frac{\boxed{}}{\boxed{}}$$

