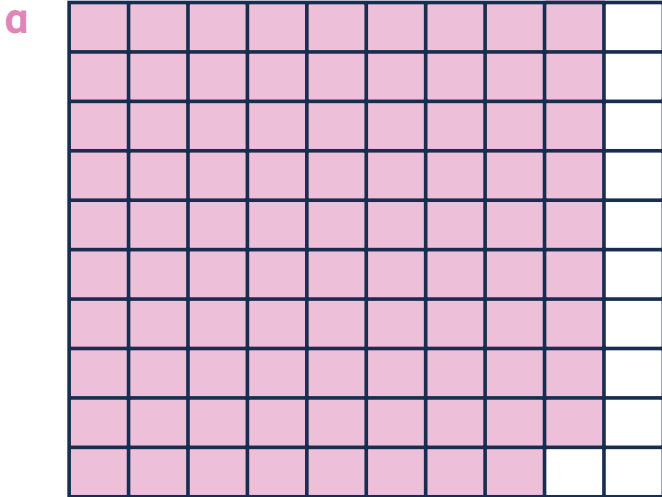


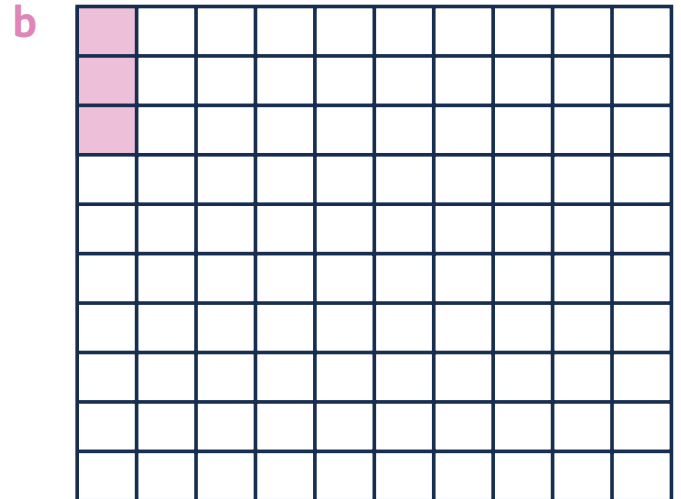
Fractions, decimals and percentages

Question 1

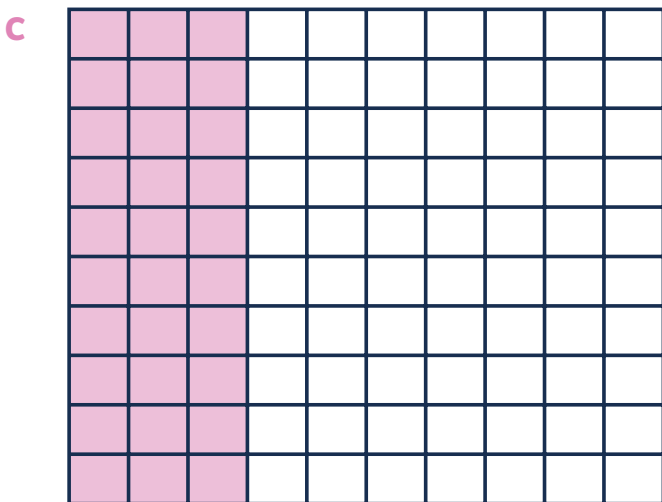
Can you write these fractions as a percentage?



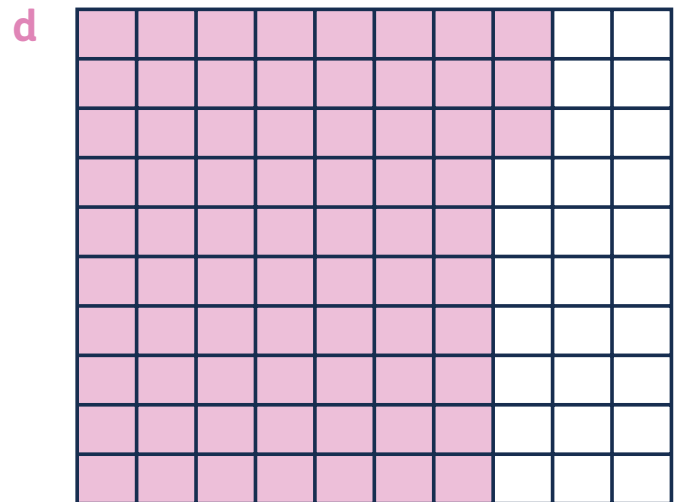
$$\frac{\square}{100} = \square \text{ out of } 100 = \square \%$$



$$\frac{\square}{100} = \square \text{ out of } 100 = \square \%$$



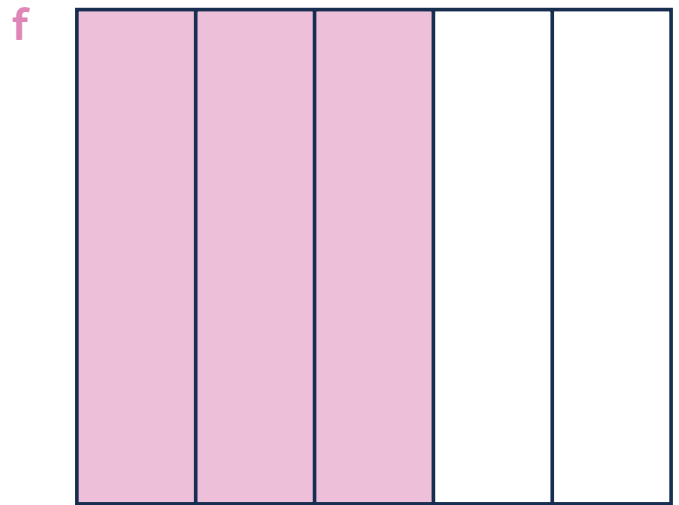
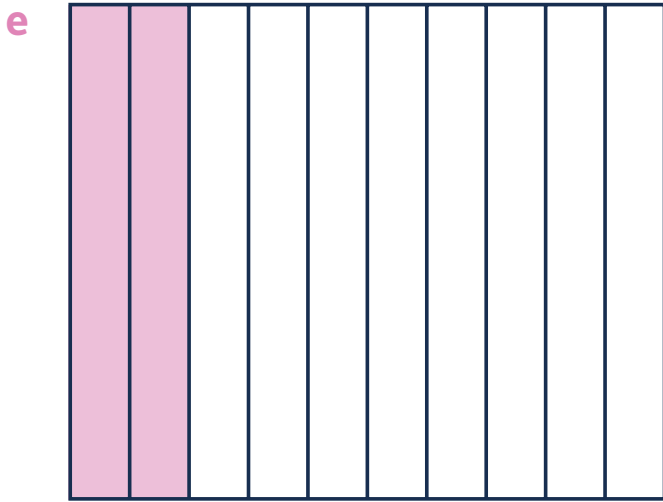
$$\frac{\square}{100} = \square \text{ out of } 100 = \square \%$$



$$\frac{\square}{100} = \square \text{ out of } 100 = \square \%$$



Fractions, decimals and percentages



$$\frac{\square}{10} = \frac{\square}{100} = \square \text{ out of } 100 = \square \%$$

$$\frac{\square}{5} = \frac{\square}{100} = \square \text{ out of } 100 = \square \%$$

Question 2

Can you complete these calculations?

a $\frac{6}{100} = \square \%$

b $\frac{\square}{10} = \frac{70}{100} = \square \%$

c $\frac{1}{\square} = \frac{\square}{100} = 10\%$

d $\frac{3}{\square} = \frac{\square}{100} = 75\%$

e $\frac{2}{5} = \frac{\square}{100} = \square \%$

f $\frac{\square}{2} = \frac{\square}{100} = 50\%$

g $\frac{\square}{\square} = \frac{86}{100} = \square \%$

h $\frac{\square}{\square} = \frac{20}{100} = \square \%$

i $\frac{\square}{\square} = \frac{\square}{100} = 8\%$



Fractions, decimals and percentages

Question 3

Can you match the equivalent fractions, decimals and percentages?

60%

$$\frac{3}{4}$$

0.4

25%

$$\frac{1}{2}$$

0.7

40%

$$\frac{3}{5}$$

0.75

70%

$$\frac{1}{4}$$

0.6

20%

$$\frac{2}{5}$$

0.25

50%

$$\frac{7}{10}$$

0.2

75%

$$\frac{1}{5}$$

0.5

Question 4

Can you complete these number sentences?

a $0.64 = \frac{\square}{100} = \square\%$
b $0.\square = \frac{\square}{100} = 30\%$
c $0.\square = \frac{90}{100} = \square\%$

d $0.37 = \frac{\square}{100} = \square\%$
e $0.\square = \frac{97}{100} = \square\%$
f $0.\square = \frac{7}{100} = \square\%$



Fractions, decimals and percentages

Question 5

Can you order these fractions, decimals and percentages?

a 0.83 $\frac{4}{5}$ 81%

> >

b $\frac{3}{4}$ 0.7 72%

< <

c 24% 0.26 $\frac{1}{4}$

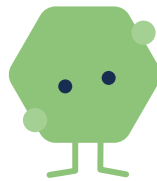
< <

d 6% $\frac{2}{25}$ 0.6

> >

Question 6

Can you help solve this problem?



In a survey, 25% of children said Maths was their favourite subject. $\frac{2}{5}$ said English was their favourite subject. All the other children said History was their favourite subject.

Can you order the subjects from most popular to least popular?



Fractions, decimals and percentages

Question 7

Can you find these percentages of amounts?

a 50% of 40 = **b** 25% of 320 = **c** 10% of 150 =

d 10% of 26 = **e** 20% of 26 =

Question 8

Calculate the missing percentages of the number in the middle.

