

Measures, time and timetables

Question 1

Can you match the equivalent measures together?

half a litre

quarter of a litre

0.2 litres

1,000 g

five hundred milligrams

500 ml

1 kg

500 mg

500 g

200 ml

250 ml

half a kilogram



Measures, time and timetables

Question 2

Can you complete these number sentences?

a $500 \text{ m} = \boxed{} \text{ km}$ **b** $346 \text{ ml} = \boxed{} \text{ litres}$

c $1304 \text{ m} = \boxed{} \text{ km}$ **d** $25 \text{ litres} = \boxed{} \text{ ml}$

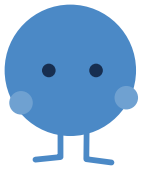
e $5.23 \text{ kg} = \boxed{} \text{ g}$ **f** $0.01 \text{ kg} = \boxed{} \text{ g}$

g $5 \text{ g} = \boxed{} \text{ mg}$ **h** $7000 \text{ mg} = \boxed{} \text{ kg}$



Measures, time and timetables

Question 3

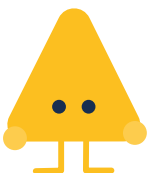


Tabitha is pouring squash from a 2.5 litre bottle into 300 ml cups.

How many full cups of squash can she get from the bottle?



Rohan is using a 5 metre roll of string to tie round five presents. Each present needs 82 cm of string. How much string does he have left over?



Isla is $\frac{3}{8}$ of the way around a 4 km walk. How many metres has she gone so far?



Measures, time and timetables

Question 4

Circle the best estimate for these conversions. Use the conversion keys to help you.

1 pound \approx 500 g
1 kg \approx 2.2 pounds

1 inch \approx 2.5 cm

1 mile \approx 1.6 km
5 miles \approx 2.2 pounds

A car drives for 6 miles. This is approximately:

- a** 10 kilometres **b** 12 kilometres **c** 4 kilometres

A train travels at 80 kilometres an hour. This is approximately:

- a** 50 miles per hour **b** 55 miles per hour **c** 45 miles per hour

A ruler is 30 centimetres long. This is approximately:

- a** 15 inches **b** 75 inches **c** 12 inches

Plants are sown 6 inches apart. This is approximately:

- a** 15 cm **b** 2.4 cm **c** 12 cm

Matt's cat weighs 3 kilograms. This is approximately:

- a** 7 pounds **b** 2 pounds **c** 8 pounds

A cake needs 2 pounds of flour. This is approximately:

- a** 1000 grams **b** 500 grams **c** 500 kilograms



Measures, time and timetables

Question 5

Can you convert these times?

a 120 seconds = minutes

b 183 seconds = minutes and seconds

c 177 seconds = minutes and seconds

d 0.25 hours = minutes

e 3.5 hours = minutes

f 0.1 hours = seconds

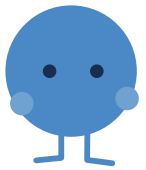
g 75 minutes = hours

h 450 minutes = hours



Measures, time and timetables

Question 6



Finn starts watching a film at 6pm. The film is 123 minutes long. What time will Finn's film finish?



The journey by train from London to Rome takes 18 hours. If I set off at 10pm on Thursday night, when will I arrive in Rome?



The school morning timetable starts at 9am. There are 10 minutes of registration, three 45-minute lessons and a 15 minute break. What time does lunch start?



Measures, time and timetables

Question 6

Rasheed is looking at a bus timetable.

Ash Gate	06:53	08:42	10:31	12:24
Broad Hill	07:13	09:00	10:52	12:44
Coletown	07:26	09:14	11:04	12:58
Down Vale	07:50	09:35	11:27	13:19

- a** How long does the first bus of the day take to travel from:

Ash Gate to Coletown?

Ash Gate to Down Vale?

- b** What time does the quickest bus journey of the day leave Ash Gate?

- c** The 12:24 bus from Ash Gate is running 35 minutes late. What time will it arrive in Broad Hill?

- d** What's the latest bus Rasheed can catch from Broad Hill if he wants to arrive in Down Vale by 12pm?



Measures, time and timetables

- e There is a return bus in the afternoon.

This bus takes exactly 18 minutes between each stop. Fill in the timetable to show when it stops at Down Vale and Ash Gate.

Down Vale	<hr/>
Coletown	17:52
Broad Hill	18:10
Ash Gate	<hr/>

- f Is this bus faster than the outward journeys?

